

# GRIEVE

*Family Winery*

## OVERVIEW

Located in Napa's remote Lovall Valley, a small growing area noted for its uniquely cool climate, Grieve Family Wines marries distinct viticulture and masterful winemaking to produce Bordeaux-style wines of exquisite site expression and stylistic integrity. The winery produces two labels, the Grieve Family Estate Wines, exclusively from their Lovall Valley estate vineyard, and the Grieve Family Double Eagle wines a blend of estate and Napa Valley appellation fruit that is named for vintner David Grieve's passion for golf.

**Established:** 2008

**Proprietors:** David and Kathleen Grieve

**Location:** Lovall Valley, Napa Valley

**Estate Vineyard:** 60 acres total: 12.23 acres Sauvignon Blanc, 4.49 acres Merlot. Organically Farmed

**Winemaker:** Philippe Melka

**Annual Production:** Less than 2,000 cases

**Wines** Grieve Family Estate Sauvignon Blanc (\$90)

Grieve Family Winery Double Eagle Red (\$89), Sauvignon Blanc (\$49.50), and Cabernet Sauvignon (\$195)

## WINEMAKING

Inspired by his early years at Bordeaux's famed Château Haut-Brion and Château Pétrus as well as Napa Valley's storied Dominus Estate, French-born winemaker Philippe Melka marries old world traditions and sensibilities with new world protocols to produce Grieve Family Wines that are harmonious expressions of site, varietal and vintage. In the cellar, select blocks destined for Grieve Family Estate wines are treated to lot-specific winemaking and extended French oak barrel aging, while the Grieve Family Double Eagle wines see a unique mix of stainless steel, concrete egg and French oak. All wines are bottled unfiltered and unfined.

## VINEYARDS

The Grieve Family Estate Vineyard is located in Lovall Valley, the remote – and tiny – Napa Valley growing area tucked into the hills that separate the southern ends of Napa and Sonoma valleys. Here, fog from nearby San Pablo Bay settles daily into the unique bowl shape contours of Lovall Valley, from early evening through midday, making it one of Napa Valley's coolest regions. This unique climate profile, more like Sonoma Coast than Napa, combined with ocean-floor silt soils and meticulous organic farming produces the estate's expressive fruit signature and taught acidic structure. For their part, Grieve Family Double Eagle red wines find their provenance in top Napa Valley sites selected for their rich, valley-floor fruit profile.

**Distribution:** Grieve Family Wines are offered through fine wine shops and restaurants in select markets nationally, and via the winery website and mailing list.

**Visit:** The Grieve Family Estate Vineyard is open to guests by appointment only.

**Press Contact:** Marty LaPlante, 707-529-4808, [martylaplante@gmail.com](mailto:martylaplante@gmail.com)

**Winery Contact:** [www.grievewinery.com](http://www.grievewinery.com)

# GRIEVE

*Family Winery*

## ABOUT

When Real Estate investor David Grieve and wife, Kathleen Grieve moved from San Francisco to wine country in 2002 and purchased their dream home on 10 acres in Napa's Lovall Valley, they knew they'd found a special spot, they just didn't realize how special.

Part of what drew the Grieves to the new property was the neighboring Sauvignon Blanc vineyard. At first, it was the view, but over time they developed a growing appreciation and fascination with the vines themselves. Both David and Kathleen were avid wine enthusiasts, but neither had much experience with Sauvignon Blanc. They studied up on the varietal and began to sample Sauvignon Blanc from different producers to develop their preferred style. It was during their studies they discovered that Lovall Valley, with its elevated exposures, fog-cooled mornings and gravelly-loam soils, was an ideal spot for growing world class Sauvignon Blanc.

As luck would have it, just two years after they moved to Lovall Valley, the neighboring vineyard went on the market, and Grieve Family Estate took root.

In 2008, after several vintages spent learning the land, converting to organic farming practices, and developing the vineyard's provenance with grape sales to prominent Napa wineries, David and Kathleen produced their first Grieve Family Estate Sauvignon Blanc.

Two years later they launched "Double Eagle" – named for David's other passion, golf - a red Bordeaux blend made from grapes grown at their favorite valley-floor sites in Oakville and Mt Veeder.

In 2018, the Grieves hired renowned French-born winemaker Philippe Melka, a specialist in site-driven wines who was eager to work with Lovall Valley grapes, to fully realize the potential of their prized estate vineyard.

Today, with the help of teenage sons Henry and Michael, and dutiful Labradors Brick and Bear, the Grieves preside over 17-acres of organically-farmed Sauvignon Blanc and Merlot vines, and produce under 2,000 cases each year for mailing list customers and select wine shops and restaurants.

"Magical from the moment we laid eyes on it, Lovall Valley is a rare hilltop valley, one of Napa's coolest and most remote growing regions, and home to our own Grieve Family Estate Vineyard. Here, our site-specific, organic farming works in concert with the area's uniquely cool microclimate to produce Grieve Family wines of profound richness, structure and site expression."

**DAVID AND KATHLEEN  
GRIEVE, PROPRIETORS**

# GRIEVE

*Family Winery*

## WINEMAKER

Named one of the top ten wine consultants in the world, French-born winemaker Philippe Melka can afford to be selective about the sites he chooses to work with. A champion of soil-driven wines with a pedigree that includes a who's who of top wine estates including Château Haut Brion, Petrus, Dominus Estate and Silver Oak, Philippe is drawn to vineyards coveted for their distinct terroir and potential for producing truly transformative wines.

A self-described soil nerd, who was always intrigued by the intricacies of the land, Philippe originally pursued a degree in Geology at University of Bordeaux. A winemaking class during his final year, however, proved pivotal - setting him on a new course that would see him become one of the world's most coveted winemakers with a roster of prestigious clients spanning Bordeaux, Chianti, Australia and Napa Valley.

David and Kathleen had long been fans of Philippe's wines, and in particular his Sauvignon Blanc for Lail Vineyards. For his part, Philippe, was excited by the vineyard's terroir, and the opportunity to work with Lovall Valley fruit. In 2018, after being introduced by mutual friend Tuck Beckstoffer, Philippe, along with his Atelier Melka winemaking partner Maayan Koschitzky took the reins as head winemakers for Grieve Family Winery.

At Grieve Family Winery, Philippe and Maayan combine old world traditions and sensibilities with new world advancements to produce a portfolio of limited-production wines that are harmonious expressions of site, varietal and vintage.



**“IT’S ALL ABOUT TERROIR  
AND WORKING WITH  
THE RIGHT SITE”**

**PHILIPPE MELKA**

# GRIEVE

*Family Winery*



## WINES

With the help of esteemed winemaker Philippe Melka, winery owners David and Kathleen Grieve produce two labels, drawing on the organically farmed fruit grown at their small estate vineyard, located in Napa's remote Lovall Valley.

## GRIEVE FAMILY ESTATE WINES

The winery's flagship Estate Sauvignon Blanc and Merlot are crafted entirely from fruit grown at the winery's organically farmed estate vineyard in Napa's remote Lovall Valley. Special clonal selections combined with the site's unique bowl-shaped topography, gravelly-loam soils and cooler, fog-impacted micro-climate produce distinctly rich and character driven wines. The estate wines are vinified separately by lot to amplify site signatures and treated to extended aging in French oak barrels for complexity and ageability.

## GRIEVE FAMILY "DOUBLE EAGLE" WINES

A line of Bordeaux blends, "Double Eagle" Red and "Double Eagle" White are crafted in a fruit-forward style from grapes grown at the estate vineyard and sourced from premier valley floor sites in Oakville and Mt. Veeder. Named for one of golf's most elusive shots (3 under par in a single hole) "Double Eagle" wines see a unique mix of stainless steel, concrete egg and French oak.

## CURRENT RELEASES

- 2018 Grieve Family Estate Sauvignon Blanc
- 2018 Grieve Family Double Eagle Red
- 2020 Grieve Family Double Eagle Sauvignon Blanc
- 2018 Grieve Family Double Eagle Cabernet Sauvignon

## 2022 RELEASES

- 2019 Grieve Family Estate Sauvignon Blanc
- 2019 Grieve Family Double Eagle Red
- 2019 Grieve Family Double Eagle Cabernet Sauvignon

Individual wine notes can be found online at [www.grievewinery.com](http://www.grievewinery.com)

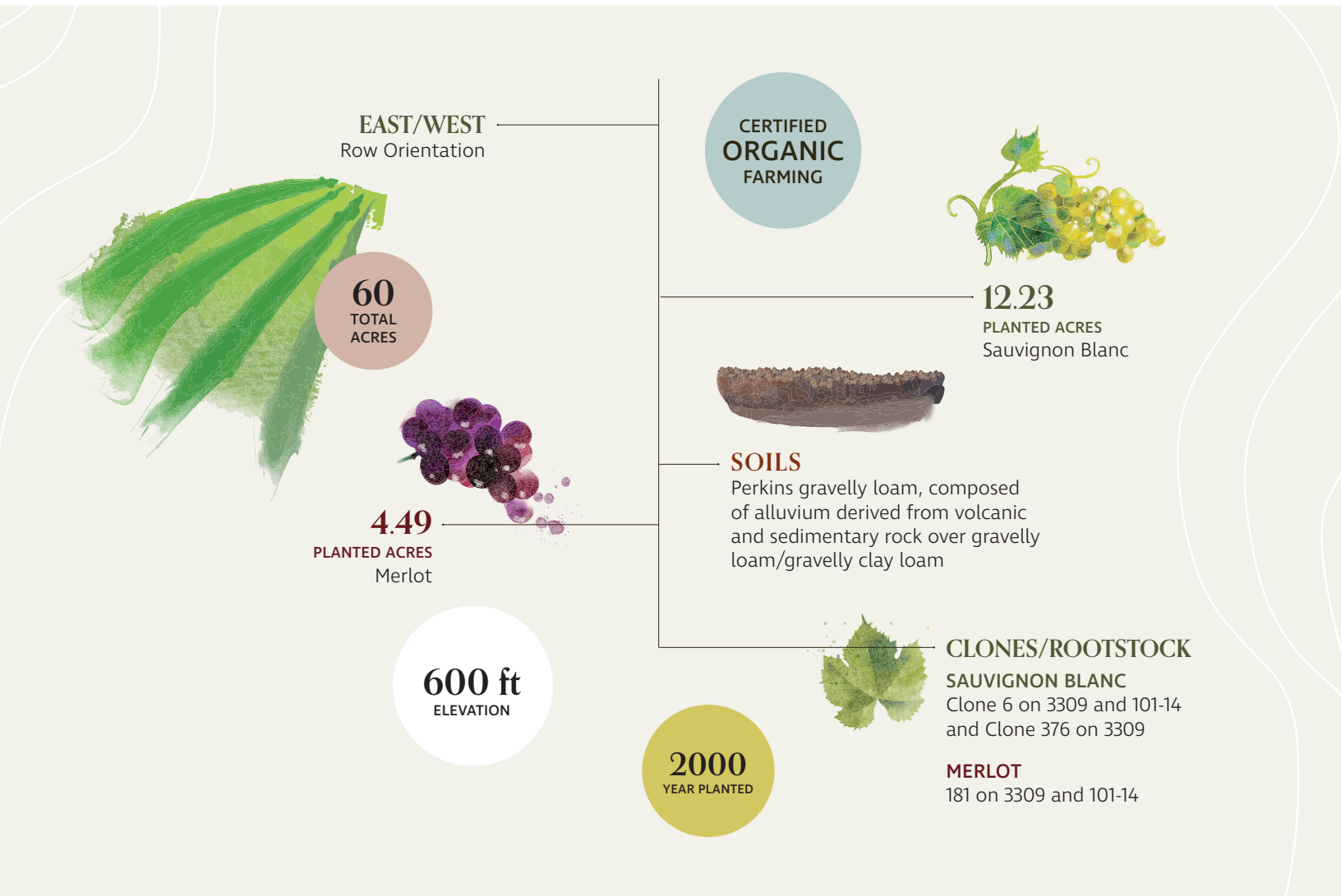
# GRIEVE

*Family Winery*

## VINEYARD

### Grieve Family Estate Vineyard, Lovall Valley

The Grieve Family Estate Vineyard is located in Napa's remote Lovall Valley, a unique hilltop bowl that straddles the border of the Napa and Sonoma valleys. Here, fog from nearby San Pablo Bay settles daily into the unique contours of Lovall Valley, from early evening through midday, making it one of Napa Valley's coolest regions. The decidedly cooler climate profile, more like Sonoma Coast than Napa, combined with volcanic/gravelly loam soils and nurtured by rigorous organic farming protocols results in the estate's distinctive fruit expression and complex structure.



# GRIEVE

*Family Winery*



## VISIT

### **Appointment-only Estate Tastings.**

A private residence, the Grieve Family Estate is not open to the public. Tastings are offered by appointment only.